

How to Calibrate the Cricut Explore Air 2 for 'Print Then Cut'

This tutorial guides you through calibrating your Cricut Explore Air 2 for 'Print Then Cut.' This feature lets you upload, print, and cut out designs using Cricut Design Space. Calibrating the machine improves cutting accuracy by enhancing edge recognition on printed images.

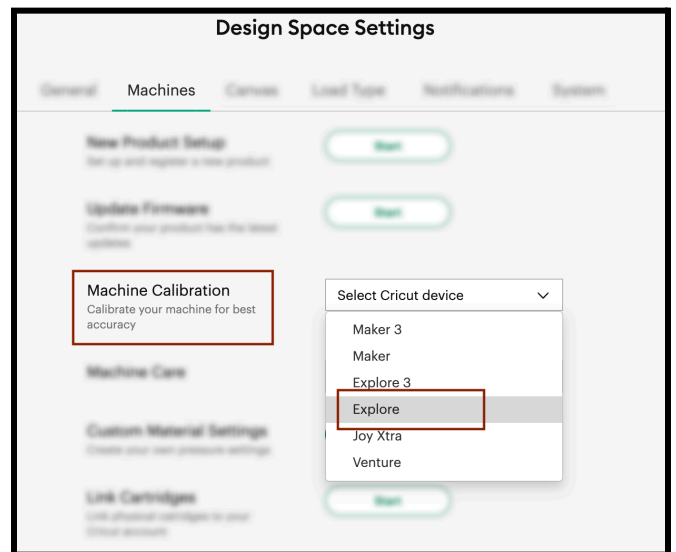
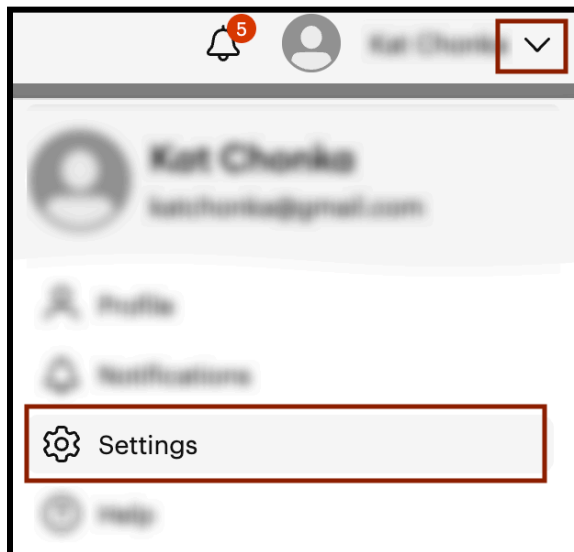
Prerequisites

This tutorial requires the following:

Hardware	Software	Materials
Cricut Explore Air 2	Cricut Design Space	Cricut cutting mat Inkjet printer Printing paper

Steps

1. In Cricut Design Space, click on the arrow in the upper-right-hand corner and select **Settings** to open the Design Space Settings.
2. Click on the **Machines** tab. Navigate to **Machine Calibration** and click on **Select Cricut Device**. Select **Explore**. Then click **Start**.



3. Click on **Print Then Cut**.
4. Select your printer from the dropdown menu. Load one sheet of paper into your printer. Then click **Print**. Once the calibration sheet prints, click **Continue**.
5. Place the calibration sheet in the top left corner of your Cricut Mat, then click **Continue**.
6. Click on **Select Cricut Air 2**. Then, select your machine from the dropdown menu, which should be connected by Bluetooth or USB.
7. Load your Cricut Mat into the Cricut Explore Air 2, as shown in **Figure A** below.

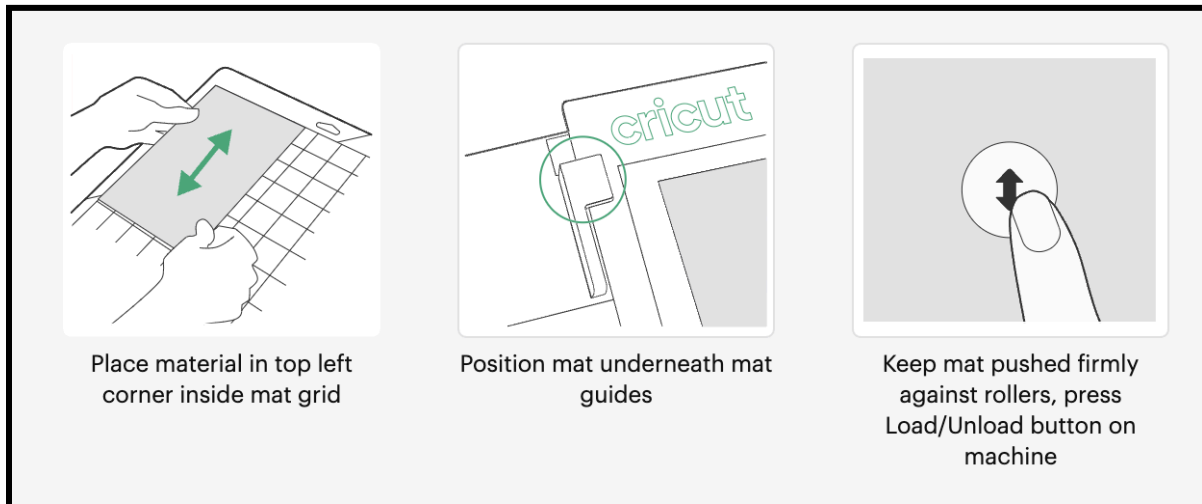


Figure A: Instructions for loading your Cricut mat

8. Press the flashing **Go** button on the Cricut. It will now scan and cut the calibration sheet.
9. Without removing the mat, look at the calibration cuts on the smallest black square in the middle of the sheet. Answer the following question: Does the cut line touch the printed line all the way around, as shown in **Figure B**?

Tip: Use your phone's flashlight for a better view.

- a. If yes: Select **Yes - Proceed to fine calibration**.
- b. If no: Select **No - Proceed to basic calibration**.

Then click **Continue**. The Cricut will make further cuts along the top and right sides of the calibration sheet.

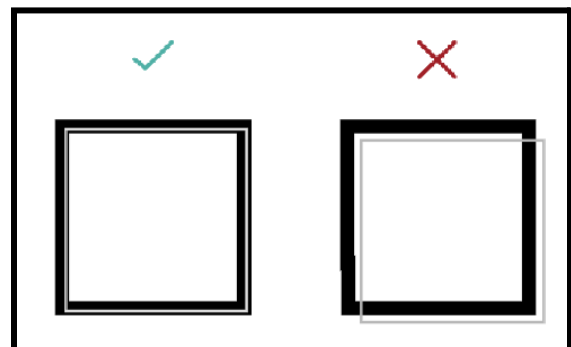


Figure B: Cut Lines in Step #9

- Without removing the mat, analyze the secondary cuts made along the top and right sides of the calibration sheet, as shown in **Figure C**.

For both sets of cut lines, choose the number or letter where the cut line is centered with the printed line, as shown in **Figure D**. Use the drop-down menu to make your selections. Then, click **Continue**.

If you are doing a Fine Calibration, the Cricut will now make a confirmation cut. If you are doing a Basic Calibration, you'll be redirected to print another calibration sheet and repeat steps 4-9.

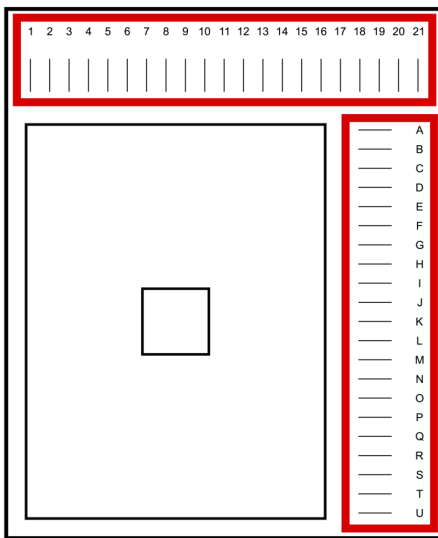


Figure C: *Cut Lines in Step #10*

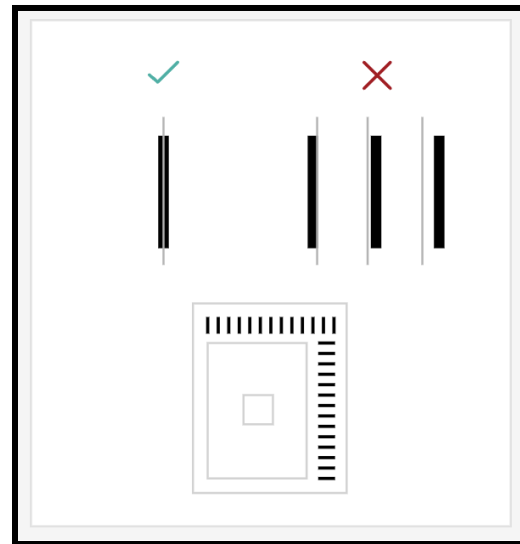


Figure D: *Selecting the correct mark*

- Without removing the mat, examine the confirmation cut on the middle rectangle of the screen. Are you satisfied with the cut? Is it close enough to the center? **Tip: Use your phone's flashlight for a better view.**
 - If yes:** Select **Yes, cut is close enough to the center**. The calibration is complete and the settings will be saved to your machine. Click **Close**.
 - If no:** Select **No, I'd like to do another calibration**. You will repeat steps 4-10 until the cut is satisfactory.